

PiiGAB M-Bus 810



Ethernet/M-Bus Gateway

Features:

- 10/100 Mbit Ethernet
- TCP/IP and UDP/IP
- SNMP for network management
- Fixed IP address or dynamic using DHCP
- Operative system independent

High security:

- 256 bit encryption (optional)
- Configurable as TCP client or server
- Password protected

Typical applications:

- Remote reading of electricity meters, heat meters, water meters, gas meters and other digital or analogue signals
- Individual remote reading of apartments
- Collect values from buildings in an industrial area, hospital or similar

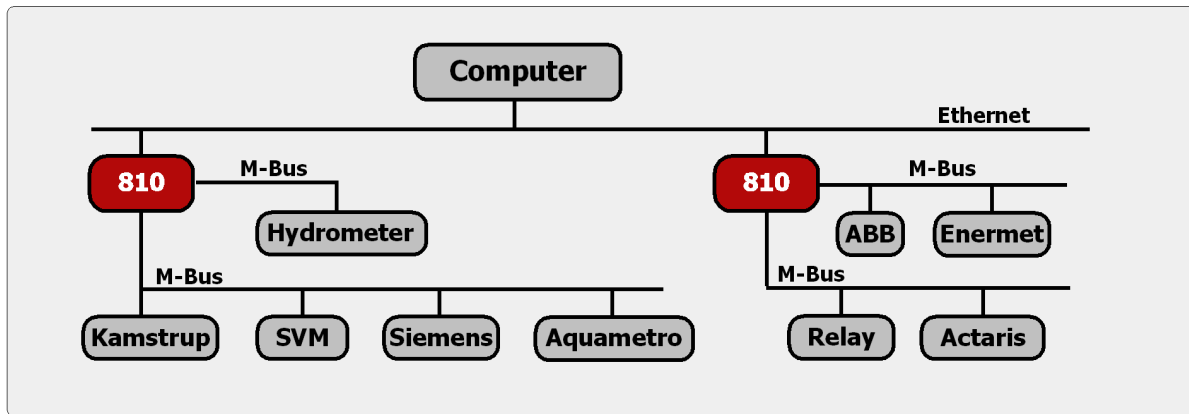
PiiGAB M-Bus 800 is a gateway/converter series designed for remote reading of M-Bus meters using local network, city network or Internet. PiiGAB M-Bus 810 has front connectors for both Ethernet and serial communication.

PiiGAB M-Bus 810 is designed to transparently read all types of meters which support the M-Bus standard, both electrically and protocol, using Ethernet and TCP or UDP. PiiGAB M-Bus 810 translates the electrical signals of M-Bus to Ethernet. The M-Bus messages are read by standard software e.g. SCADA-system, remote reading program, configuration program, databases, RTU/PLC etc.

A driver for COM-port redirection is included on the CD which turns the 810 M-Bus port into a virtual communication port on your computer. This means that most M-Bus programs on the market can be used independently, whether they have support for Ethernet or not.

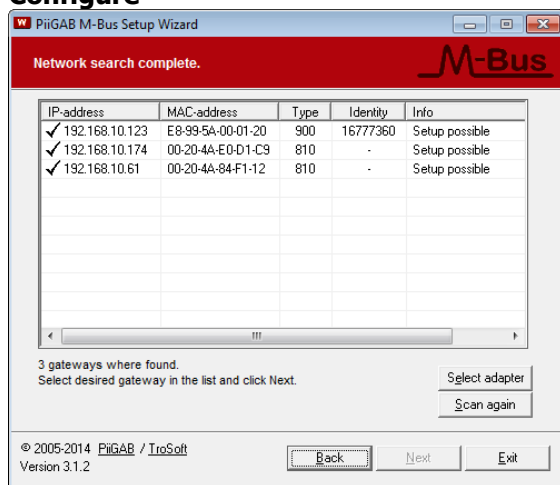
PiiGAB M-Bus 810 may be remotely configured using the M-Bus Setup Wizard, the built-in web-interface or Telnet. With the configuration program the PiiGAB M-Bus 810 can also be configured directly at site using a serial connection. The latter method ensures the highest possible level of security. The Telnet setup makes the gateway operative system independent, which means e.g. Linux may be used. The M-Bus Setup Wizard can also be running on Linux with the Wine software.

PiiGAB M-Bus 810 can totally power 2, 5, 20 or 60 M-Bus loads (1 M-Bus load = 1.5 mA). There are four parallel M-Bus terminals using the same physical gateway interface for connections to the M-Bus network.



Basic schematics

Configure



Network search dialog

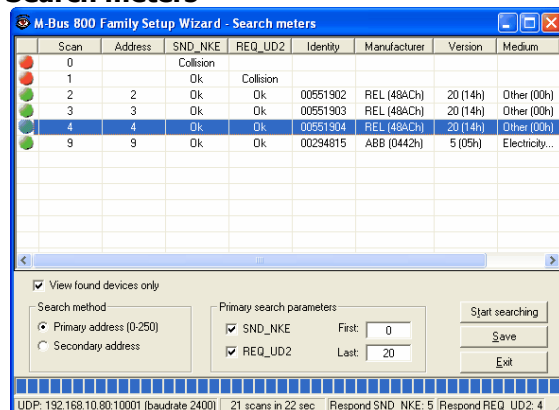
For the unit to operate correctly on a LAN, it must have a unique IP address. There are three basic methods for assigning the IP address:

- **PiiGAB M-Bus Setup Wizard:** You manually assign the IP address using a graphical user interface on a PC attached to a network.
- **Network Port Login:** Make a Telnet connection to the network port (9999).
- **Serial Port Login:** Connect a terminal or a PC running a terminal emulation program to the unit's serial port.

Ordering information:

Order number	Description
PI-810/2	Up to 2 M-Bus loads
PI-810/5	Up to 5 M-Bus loads
PI-810/20	Up to 20 M-Bus loads
PI-810/60	Up to 60 M-Bus loads

Search meters



Primary search method

It's possible to search for installed meters. You can choose between the primary or secondary addressing method. When you double click the selected meter you can continue to test the physical meter, change address, baudrate etc.

Technical specifications:

- **Ports:** RJ45 port for Ethernet with indication for 10Base-T/100Base-Tx, RJ12 serial port
- **Power:** 24V AC or DC (local supply)
- **Rated Current:**
250mA (5 and 20 M-Bus loads)
350mA (60 M-Bus loads)
- **M-Bus:** EN1434, EN13757
- **Coating:** IP20
- **Size:** WxHxD 70 x 86 x 57
- **Montage:** DIN-rail

The content in this document is without guarantees. PiiGAB reserves the right to revise, change or correct the contents within this document without any prior notice.

Copyright © 2008 by PiiGAB, Processinformation i Göteborg AB. All trademarks or registered trademarks are the property of their respective owners.